

Library Services Overview

Emphasis: CINAHL

Helen Hough, M.L.S.
Hough@uta.edu
University of Texas at Arlington

Using CINAHL on the WEB



Using CINAHL on the WEB

What is CINAHL?

CINAHL stands for Cumulative Index to Nursing And Allied Health Literature index to nursing literature (articles, books, etc.)

Why use CINAHL

- provides references to nursing publications
- uses subject terms relevant to nursing

Using CINAHL on the WEB

What CINAHL is not

For the most part, it does not include entire articles; only *some* Full-text materials (2%). It may link to other databases

What to use after CINAHL

Check *PULSe* (UTA Library's catalog) to determine if any particular journal is available.
Check UTA Libraries' *Electronic Magazines and Journals* page for possible electronic editions.
If an item is not in the Library, use I.L.L.

4

1/21/2008

Using CINAHL on the WEB



Start at the UTA Libraries Homepage:
www.uta.edu/library

5

1/21/2008

getting to CINAHL search screen



Select *Research Resources* by clicking on the underlined entry

6

1/21/2008

getting to CINAHL search screen

Locate Databases
(Abstracts and Indexes)
using scroll bar

Click on underlined text

7

1/21/2006

getting to CINAHL search screen

Scroll down to
locate database
(CINAHL)

8

1/21/2006

getting to CINAHL search screen

Locate Database
(CINAHL)
Either by title
letter (C)
or subject
**(Medicine &
Health)**

9

1/21/2006

getting to CINAHL search screen

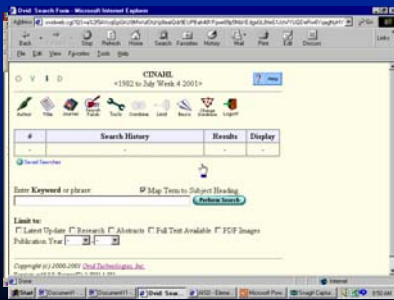


1. scroll bar or down page key To CINAHL
2. locate & click CINAHL entry

10

1/21/2006

getting to CINAHL search screen

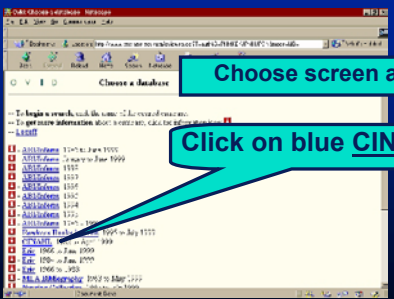


1. appears. CINAHL)

11

1/21/2006

getting to CINAHL search screen



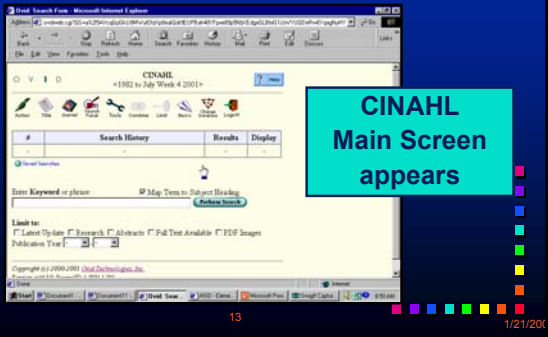
1. Choose screen appears.

2. Click on blue CINAHL

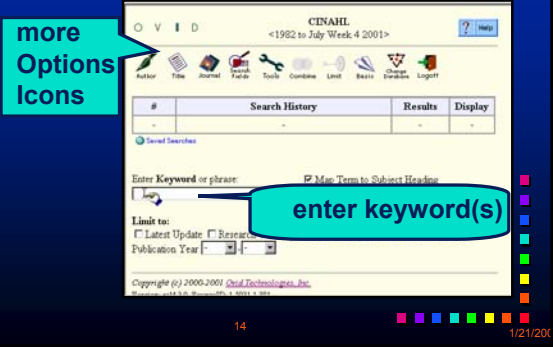
12

1/21/2006

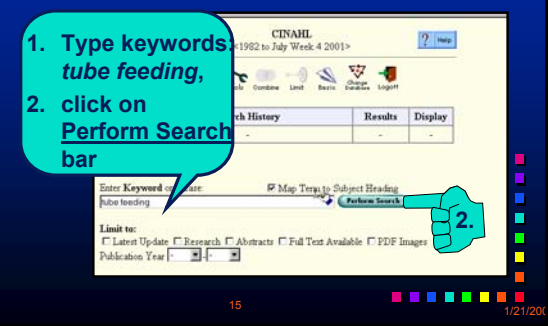
CINAHL Main Search Page



CINAHL Main Search Page



Sample CINAHL Search



Sample CINAHL Search

The screenshot shows the 'Mapping Display' interface. At the top, there are navigation icons (O, V, I, D) and a 'Help' button. Below that is a 'Continue' button. The main text reads: 'Your term mapped to the following Subject Headings. See term mapped to thesaurus term'. A table follows with columns 'Select' and 'Subject Heading'. The first row has a checked checkbox and 'Enteral Nutrition'. The second row has an unchecked checkbox and 'tube feeding.mp. search as Keyword'. A hand icon points to the 'Continue' button. A cyan callout box contains the text: 'tube feeding: not a formal subject. Suggestions offered'. At the bottom, there are 'Hints' and a footer with the number '16' and the date '1/21/2008'.

Sample CINAHL Search

This screenshot is similar to the previous one but includes annotations. A hand icon points to the 'Continue' button. A cyan callout box contains the text: 'Accept suggestion: Click box, Click Continue Bar'. The 'Continue' button is now highlighted with a blue checkmark. The footer shows the number '17' and the date '1/21/2008'.

Sample CINAHL Search: Subject Headings

This screenshot is similar to the previous ones but includes an annotation. A hand icon points to the 'Enteral Nutrition' subject heading. A cyan callout box contains the text: 'Or find out about meaning & relationships of suggested term, Click on the term.' The footer shows the number '18' and the date '1/21/2008'.

Sample CINAHL Search: Subject Headings

Shows a relationship with *Feeding Methods*.

1. Click on accept box
2. Click on Continue.

Sample CINAHL Search: Subheadings

Subheadings may be suggested.
HINT: *select all and modify later*

Sample CINAHL Search

If topic has more than one subject, try the other subject also

Search #1 has 1226 references

Sample CINAHL Search

1. Type second concept's Keyword (*diarrhea*),

2. Click Perform Search

Enter Keyword or phrase: Map Term to Subject Heading

Limit to:
 Latest Update Research Abstracts Full Text Available PDF Images

Publication Year: [] []

22 1/21/2008

Sample CINAHL Search

AGAIN, subjects & subheadings suggested.

HINT: *select all, modify later*

Your term mapped to **DIARRHEA**

Select Subject Heading

- DIARRHEA**
- DIARRHEA/**
- DIARRHEA/**
- diarrhea mp. se**

Hints

23 1/21/2008

Sample CINAHL Search: Modifying

Modify to create a set to include both ideas, COMBINE

Search History

#	Search
1	Enteral Nutrition/
2	DIARRHEA/

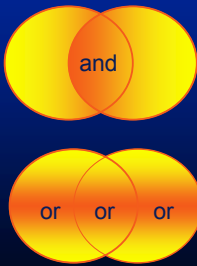
Enter Keyword or phrase: Map Term to

Limit to:
 Latest Update Research Abstracts Full Text Available PDF Images

Publication Year: [] []

24 1/21/2008

Sample CINAHL Search: Modifying



COMBINE:

AND: all must have both ideas

OR: any must have either idea

25

1/21/2004

Sample CINAHL Search: Modifying

#	Search History	Records	Options
1	Enteral Nutrition/	933	Options
2	DIARRHEA/	82	Options
3	1 and 2	82	Display

An AND made a set of 82 records.
LIMITS can also be used.

26

1/21/2004

Sample CINAHL Search: Modifying

Limit to:

- Review Articles
- Abstracts
- Male
- Full Text Available
- Publication Year
- Search
- Care
- Female
- CINAHL Available
- Consumer Health Journals
- Update
- Available

From Limit screen:

- identify Set to modify &
- select options

27

1/21/2004

Sample CINAHL Search: Viewing

Screen bottom:
Select 1. Complete Record &
2. Include Search History.
3. Click Display.

34

1/21/2004

Sample CINAHL Search: Printing

Display Screen appears.
To Print: Click
on Browser's
Print Button.

35

1/21/2004

Sample CINAHL Search: Results

These Citations show what exists,
NOT
what is in the Library;
A FEW MAY include
fulltext (the entire
article).

36

1/21/2004

Sample CINAHL Search: Results

CHECK:
“Library’s Catalog (PULSe)”
and/or “Electronic
Magazines & Journals”
page
to determine if any particular
journal is available.

Accession Number
1997027780

Authors
Robinson, D., Davidson, M., Smith, C.

Institution
University of Tennessee College of Health Sciences
771
Proctor-Kelly, B.

Title
Diary of external freestyle
exercise and patients

Source
Heart & Lung: Journal of Acute & Critical Care. 26(3):229-37, 1997 May-Jun. (33 ref)

Document Delivery
NLM Serial Identifier: H09540000

Journal Subset

of Document Done

Sample CINAHL Search: Log off

**To End: Click
Return to Main
Screen**

CINAHL 1982 to December 1997

#	Search History	Results
1	External nutrition	922
2	Diet/meal	547
3	1 and 2	65
4	limit 3 to (research and journal)	17
5	from 4 keep 4,6-11,13-15,17	11

Results of your search (set 5) from 4 [limit 3 to (research and journal)] keep 4,6-11,13-15,17
Citations available: 11
Citations displayed: 1-11

of Document Done

More Questions?

Contact UTA Libraries Reference staff at:
(817) 272-3394 or Ref@library.uta.edu
