

**RICOH**  
imagine. change.

## Getting started with RICOH THETA

Easy to Follow Instruction



 **THETA**

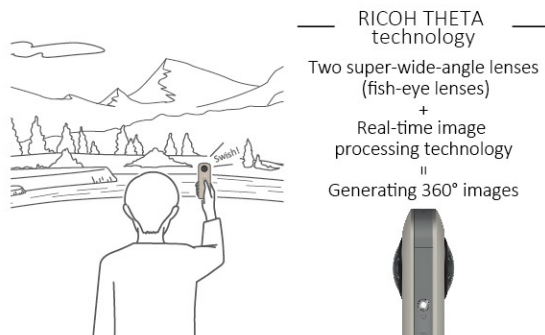
Have a virtual experience of being there.



## What can you do with RICOH THETA?

**Shoot** Record an entire scene with a single shot.

By using the application, RICOH THETA also enables shooting using remote control or manually.



**View** By using the application, view a 360° picture or video.

Watch your favorite parts simply by swiping and pinching.



**Enjoy** Edit in various fun ways and share worldwide.

You can use various SNS and email services to easily share 360° images with your friends, and using the editing app lets you enjoy the content in even more ways.

— Basic application —



— Special editing app —

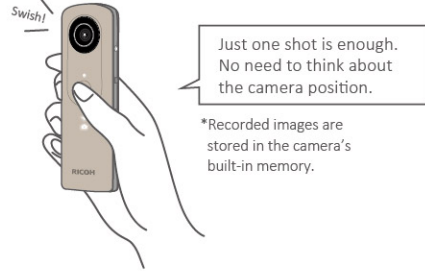
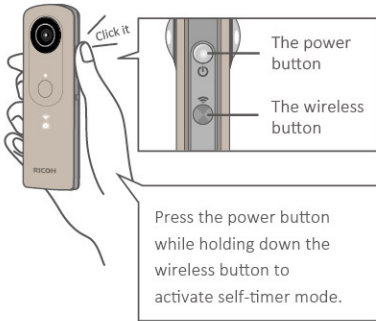




### Taking Still Images

1. Turn the power on.

2. Hold it still and press the shutter button.



### Shooting Remotely

\*All of the app screenshots featured in this booklet are from the iOS.

1. Connect THETA with a smartphone over Wi-Fi and launch the THETA S app.

2. Tap the Button on the screen to release the shutter

— Basic application —



\*A connection setup is necessary when connecting RICOH THETA to a smartphone for the first time. For connection methods, refer to the "Quick Start Guide" included with the product.



[You can change the shooting mode to make various adjustments including brightness and color hues]

Features only available with the RICOH THETA V

Bluetooth® Connection 

Stay connected to a smartphone, so you can quickly start shooting remotely at any time.



- Auto shooting
- Shutter Priority
- ISO Priority
- Manual

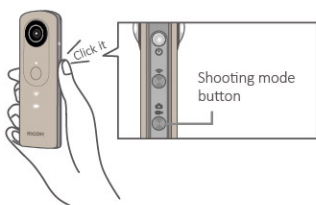
\*Turn the smartphone's Wi-Fi mode on.

# Shooting videos Let's shoot!

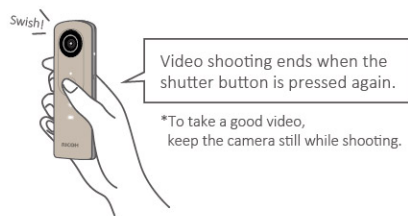


## Shooting Videos

1. Press the shooting mode button and select the video mode.



2. Press the shutter button to start video shooting.



## Taking a Video by Remote Control

1. Connect THETA with a smartphone over Wi-Fi and launch the THETA S app.

— Basic application —



2. Tap to start recording, and tap again to stop.



Features only available with the RICOH THETA V

### 4K video **4K**

Capture high-quality video at 30 fps in 4K (3840 x 1920 pixels) resolution.

### 360° spatial audio **360 Spatial Audio**

Enjoy audio virtual reality thanks to the build-in 4-channel microphone.



The dedicated 3D microphone lets you enjoy VR with even higher sound quality.

\*Optional



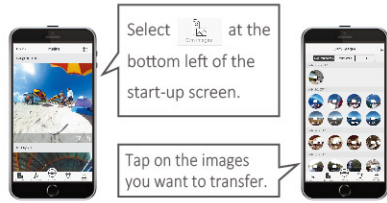
### 4K live streaming **4K LIVE**

You can output 360° video at 30 fps in 4K (3840 x 1920 pixels) resolution and in real time.

# Still Images and Videos View them now!

## Transferring to a Smartphone

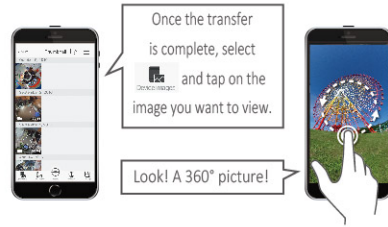
Launch the basic app, select [Cam images] and tap the images you want to transfer.



\*Turn the smartphone's Wi-Fi mode on.

## Viewing on a Smartphone

Select [Device images] and tap on the image you want to view.



\*Once an image has been transferred it is saved.



Check out a sample here ▼



Check out a sample here ▼



Check out a sample here ▼



Check out a sample here ▼



## Watch with TV

Features only available with the RICOH THETA V

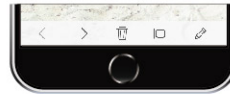
Hold down the mode button to enjoy 360° experiences with the THETA V acting as the remote control



\*A wireless display adapter is additionally required. Refer to our website for compatible products.

## Viewing in VR

1. Choose the desired image on the basic app and tap [VR] to shift between the single lens mode and the twin lens mode.



2. Enjoy virtual experiences with a VR viewer.

### Viewing in twin lens mode

Place your smartphone in a VR viewer to enjoy the image.



Features only available with the RICOH THETA V

Videos captured in 4K video mode support the 360° spatial audio feature. The VR view linked with sound will make you feel as though you are really there.



- \* VR viewing may be unavailable on some Android devices.
- \* Commercially available VR headsets can be used.
- \* Consult the instruction manual for each product for information on recommended ages.

## View on PC

Launch the PC app and drag-and-drop the image you wish to view to enjoy it in 360°



PC App



## Editing Still Images / Editing Videos

The THETA+ and THETA+ Video smartphone apps are specially designed for editing still images and video, respectively.

As well as editing still images and video in various ways, you can also save them on your smartphone and share them with your friends.

### THETA+ (for still images)

- View (view selection)
- Filters (color tone change)
- Image correction
- Stamp
- Text
- Cropping (cutting out part of the image)
- Time lapse editing
- Sharing
- Animation

\*Operation may vary depending on the OS. As of September 2017

### THETA+ Video (for videos)

- View (view selection)
- Filters (color tone change)
- Trimming (cutting video length, adjusting playback speed)
- BGM
- Cropping (cutting out part of the video framing)
- Sharing

\*Operation may vary depending on the OS. As of September 2017

### Display 360-degree content in various ways

Select from four different views to create images unique to RICOH THETA. \*1



Little planet



Mirror ball



Flat



Straight

### Create animation \*1



A cropped video that looks like a 360° still panoramic image is produced automatically. Stand out on Instagram.

### Have fun decorating with stamps and text \*1



Choose from around 100 stamps and enter your own text to decorate your 360-degree images.

### Make changes to videos \*2



You can cut videos down to the desired length and modify the playback speed. By adding your favorite background music, you can add drama to your movies.

### Create time lapse videos \*1



This 360° time lapse video mode lets you create fast motion video by combining multiple recorded still images using the interval shooting feature.

### Save your images in two ways: 360-degree image or cropped image

#### 360-degree images

Even after editing, you can spin and rotate the image. If posted to Facebook or YouTube (videos only), the 360-degree content can be experienced in VR using a smartphone.



#### Cropped images

This mode lets you save flat images and videos. Edit 360° images and videos on your own into eye-catching ones to post on Instagram and other social media. It also allows you to cut part of an image at your desired aspect ratio\*1 to save and print it just like an ordinary photo.



\*1: Function only available in THETA+ (for still images) \*2: Function only available in THETA+ Video (for video) 10

## Enjoy pictures and videos by sharing

You can easily post to SNS sites such as Twitter and Facebook from the basic app or editing app.



## Using SNS

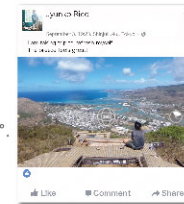
360° images taken with RICOH THETA can be enjoyed on supported SNS sites.

• Compatible SNS (examples):



### Posting to Facebook

Spherical still images and videos can be posted as-is to Facebook, allowing your friends to view your content in 360°.



### Posting to Twitter

You can upload content to the Ricoh cloud space (theta360.com) and place a link in a Twitter post.



The linked page can be viewed in 360°.

### Posting to Instagram

Using the THETA+ and THETA+ Video editing apps, you can share your proud creations with friends. Posting creative THETA images to Instagram is a popular style!



### Posting to YouTube

YouTube supports 360° video. With the YouTube app you can easily share virtual reality experiences in VR view (twin lens).



### Posting to Google Street View

With the Street View app, you can do everything from shooting THETA images with remote control to uploading 360° images. Create your own original street view images out of common sights or scenery during travel.



\*These are images of submitted pictures.

# Explore Various Shooting Scenarios



Travel



Underwater



Mountain Climbing

Wedding Ceremonies



@rallycrosslife

Time with Family and Friends



@YouMakeFashion

We recommend shooting still images or video even on regular days when nothing much is happening.

Even when it's not a particularly special day, photos taken with family serve as a record of precious moments. As time passes, you will look back on unassuming daily moments—of a daughter when she was still a baby, a beloved grandparents, or even your own younger self—and be able to recreate those instances in the vivid detail of a 360-degree virtual experience.

## Optional accessories THETA accessories to further enhance your experience

Underwater Housing Case TW-1

3D Microphone TA-1



With camera



With camera

This waterproof case is rated to a depth of 30 meters, equivalent to JIS Class 8 waterproofing.  
\*Supports THETA V/S/SC

High fidelity 360° spatial audio with excellent directionality 3D microphone developed specifically for THETA V

### Other accessories

- Attachment for strap AT-1 (5 colors available)
- Soft Case TS-1 (Two Colors)
- Hard Case TH-2
- Cable switch CA-3
- Extension Adapter TE-1

## Learn More

### Go to the Official RICOH THETA accounts

This official account is loaded with information about various 360° works and ways of enjoying RICOH THETA. Follow the account to enjoy RICOH THETA even more.



RICOH THETA



RICOH THETA official



theta360official



RICOH THETA



## RICOH THETA Official Website – theta360.com

The official site helps you get even more out of your RICOH THETA with the latest information on RICOH THETA and related apps, a sample gallery that allows you to rotate images, and the cloud space, which allow you to post and share the 360° spherical images you have taken.





## RICOH THETA V

### High-end Model

Record 360° image in high quality with advanced functions



360° makes it real.

Supports 4K video shooting, 360° spatial audio and Bluetooth

Featuring advanced performance for recording an authentic 360° spherical world.

#### High Resolution

- 1/2.3" 12M CMOS sensor x 2 (Output pixel count equivalent to 14M<sup>\*)</sup>
- F2.0 lens • Main processor "Snapdragon"

#### 4K video capture<sup>†1</sup>

- 30 fps • 25 minutes continuous shooting

#### Support for 360° spatial audio

#### Wireless LAN connection/Bluetooth support

#### Long exposure (Maximum 60 seconds)<sup>†2</sup>

#### 19 GB Memory • Self-timer

#### High-speed data transfer<sup>†2</sup>

#### 4K live streaming

#### Remote Playback

#### Supports plugins

#### Multi bracket shooting<sup>†3</sup>

#### Color temperature specification shots<sup>†3</sup>

## RICOH THETA SC

### Standard-class Model

Enjoy 360° shooting with high performance and ease of use



360° for everyone.

RICOH THETA SC offers viewers a new experience of a 360°

spherical world as if they are actually there.

High image quality in an accessible package.

#### High Resolution

- 1/2.3" 12M CMOS sensor x 2 (Output pixel count equivalent to 14M<sup>†1</sup>)
- F2.0 lens

#### Full HD video Capture<sup>†1</sup>

- 30 fps • 5 minutes continuous shooting

#### Long exposure (Maximum 60 seconds)<sup>†2</sup>

#### Wireless LAN connection<sup>†2</sup>

#### 8 GB Memory

#### Self-timer

#### Lightweight at around 102g

#### Four Colors

#### New Features

#### Multi bracket shooting<sup>†3</sup>

#### Interval composite shooting<sup>†3</sup>

#### Color temperature specification shots<sup>†3</sup>

\*1 The resolution of recorded data. The resolution of the spherical video viewed varies depending on the display equipment or the magnification ratio.

†2 When RICOH THETA S basic app is used †3 A firmware update is required.

• Check our website for the latest functionality information.

Microsoft and Windows are registered trademarks of Microsoft Corporation in the United States of America and other countries. Mac, OS X, macOS, iPhone, and App Store are trademarks of Apple Inc., registered in the U.S. and other countries. IOS is a trademark or registered trademark of Cisco in the U.S. and other countries and is used under license. Facebook, the Facebook logo and "f" logo are the trademarks or registered trademarks of Facebook, Inc. Twitter, the Twitter logo, Twitter "t" logo and Twitter blue bird are the registered trademarks of Twitter, Inc. in the United States and other countries. Tumblr and the Tumblr logo are the registered trademarks of Tumblr, Inc. Instagram and the Camera logos are trademarks of Instagram, LLC in the United States and elsewhere. Google, Android, Google Play, YouTube and YouTube logo are trademarks or registered trademarks of Google Inc. The Bluetooth® word mark and logos are registered trademarks owned by Bluetooth SIG, Inc. and any use of such marks by Ricoh Company Ltd. is under license. All other trademarks are the property of their respective owners.

**RICOH**  
imagine. change.

RICOH COMPANY, LTD.  
RICOH IMAGING COMPANY, LTD.

As of September 2017